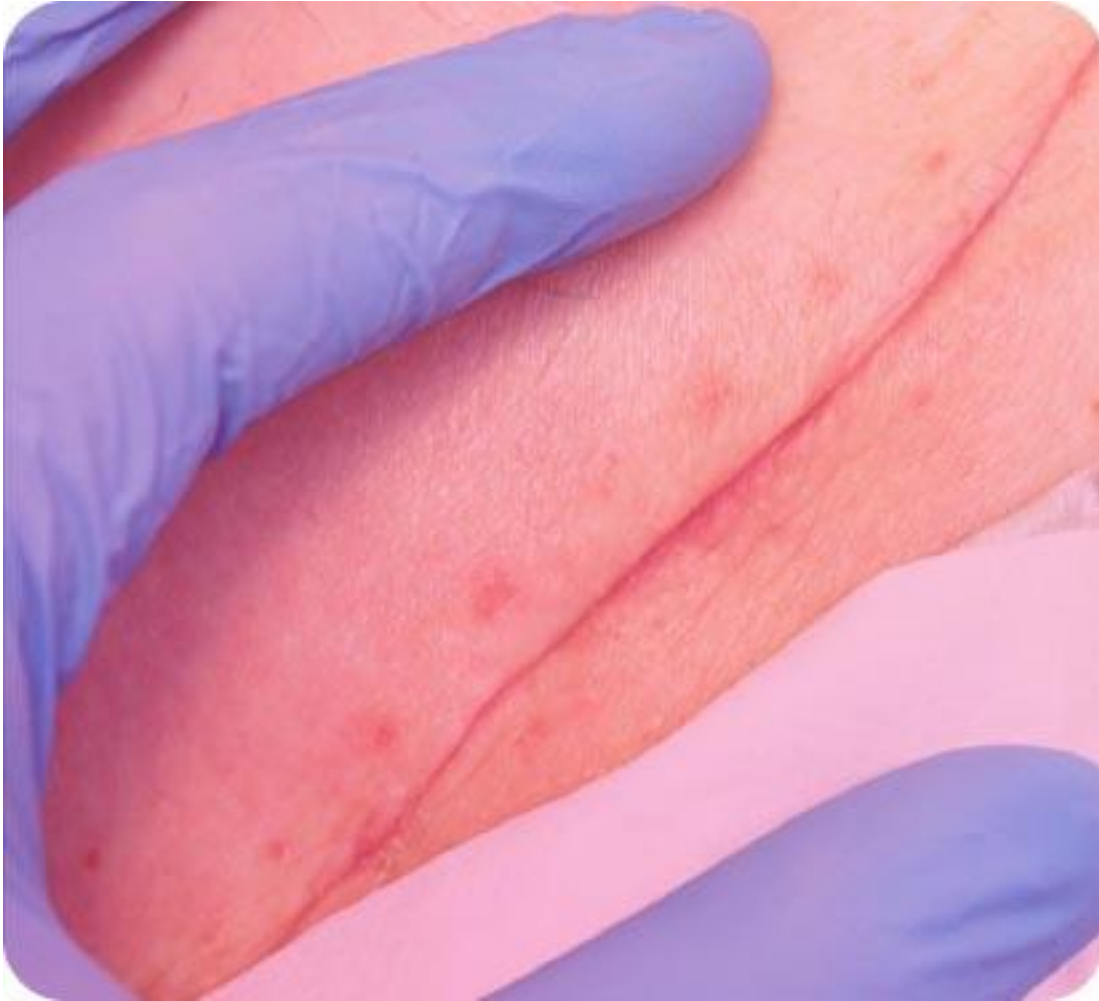




XLTA® CURE: Revolutionizing Wound Care **with Triple-Action Technology**

Super Absorbent, Hydro-capillary Dressings for Acute,
Chronic, and Highly Exudating Wounds





THE CHALLENGE

The Burden of Chronic and Complex Wounds

- Rising prevalence of chronic wounds due to diabetes, obesity, and an aging population.
- Escalating healthcare costs associated with prolonged wound care.
- Significant patient suffering and diminished quality of life.
- Complex challenges in managing wound healing and optimizing care outcomes.



THE SOLUTION

XLTA[®] CURE

- XLTA is an advanced superabsorbent hydrocapillary dressing, meticulously crafted from a proprietary blend of predominantly natural fibers.
- Designed to address a wide range of wound care needs, XLTA is unmedicated and chemical-free, offering a safe and biocompatible solution for patients.
- Its sophisticated exudate management system effectively handles varying levels of wound exudate, from low to high and beyond, helping to maintain a balanced and conducive environment for natural healing.



THE SOLUTION

XLTA[®] CURE

- At the core of XLTA's innovation lies its triple-action mechanism of hydrocapillary flow, electrostatic charge, and proteolytic enzyme balance.
- Together, these actions create a comprehensive approach to wound management.
- Hydrocapillary flow ensures rapid absorption, omnidirectional dispersion, and secure retention of exudate.
- The electrostatic charge attracts and traps harmful bacteria, cytokines, and matrix metalloproteinases (MMPs), addressing unseen barriers to healing.
- Proteolytic enzyme balance modulates excessive protease activity, safeguarding healthy tissue and creating optimal conditions for granulation and epithelialization.



THE SOLUTION

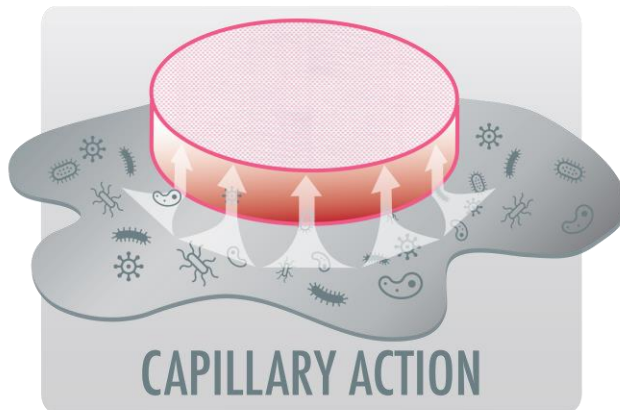
XLTA® CURE

- XLTA is more than a dressing—it is an advanced exudate management system that catalyzes natural healing processes.
- By integrating advanced fluid management, the ability to attract and trap bacteria and harmful elements, and tissue preservation, XLTA supports the body's natural healing processes across various wound types, from chronic to acute cases.
- Its adaptability, combined with atraumatic removal and compatibility as a primary or secondary dressing, makes XLTA a versatile and indispensable tool for healthcare providers committed to achieving better patient outcomes.



XLTA® CURE SOLUTION

XLTA® CURE: Triple-Action Technology Superior Outcome



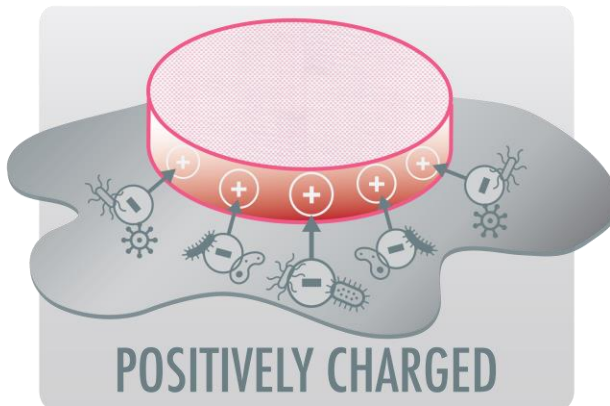
1 Hydrocapillary Flow

- **Lift-Lock-and-Hold Mechanism:** Rapidly absorbs exudate and locks it securely within the dressing, preventing fluid pooling and maceration.
- **Omnidirectional Dispersion:** Distributes fluids evenly both vertically and horizontally, optimizing moisture levels across the wound bed.
- **Layer-to-Layer Fluid Transfer:** Facilitates movement of fluids between dressing layers, enabling management of heavy exudate without compromising dressing integrity.
- **Trapping of Bacteria:** Captures bacteria and debris from the wound bed, reducing bioburden and creating a cleaner, more stable wound environment.



XLTA® CURE SOLUTION

XLTA® CURE: Triple-Action Technology Superior Outcome



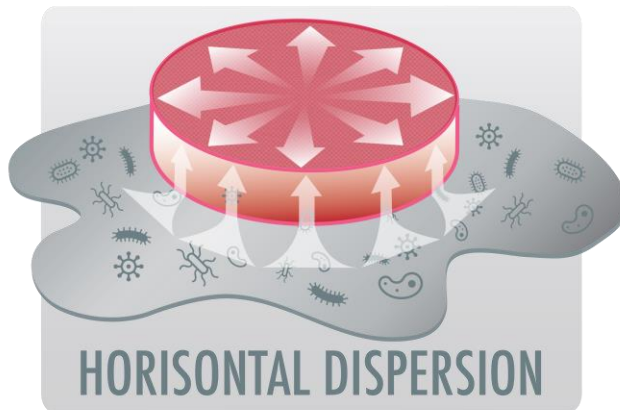
2 Electrostatic Charge

- **Targeted Attraction:** Positively charged fibers actively attract and trap negatively charged bacteria, cytokines, and matrix metalloproteinases (MMPs), reducing bioburden effectively.
- **Deep Tissue Engagement:** Draws harmful elements from deeper tissues into the wound bed for removal, fostering a more conducive healing environment.
- **Chemical-Free Action:** Provides effective wound care without chemicals or medications, minimizing risks of adverse reactions or microbial resistance.
- **Unmedicated and Natural:** Composed of natural fibers, XLTA® supports the body's healing processes by managing bioburden naturally and eliminating barriers to healing.



XLTA® CURE SOLUTION

XLTA® CURE: Triple-Action Technology Superior Outcome



3 Proteolytic Enzyme Balance

- **Regulation of Protease Activity:** Modulates excessive protease levels, such as MMPs, to maintain a stable wound environment conducive to healing.
- **Tissue Protection:** Protects healthy tissue from enzymatic degradation, ensuring the wound bed remains viable for healing.
- **Catalyzing Healing Phases:** Ensures effective protease activity to clear necrotic tissue while preserving healthy cellular structures, supporting smooth transitions between healing phases.
- **Optimized Wound Environment:** Creates an ideal environment for granulation and epithelialization, accelerating the wound's progression through natural healing stages.



THE XLTA[®] CURE SOLUTION

XLTA[®] CURE: Optimized for a wide range of wound challenges:



Exudate Management System

- Rapidly absorbs and securely retains exudate, preventing pooling and maceration that can compromise healing.
- Maintains balanced moisture levels, essential for cellular activity and effective wound progression.
- Attracts and traps harmful elements such as bacteria, cytokines, and enzymes, contributing to a cleaner wound environment.



Autolytic Debridement

- Enhances the body's natural enzymatic processes to break down necrotic tissue without the need for external interventions.
- Provides an optimal moisture balance, facilitating efficient clearance of debris and slough.
- Enables atraumatic wound cleaning, minimizing disruptions to newly formed tissue and promoting patient comfort.



THE XLTA® CURE SOLUTION

XLTA® CURE: Optimized for a wide range of wound challenges:



Wound Bed Preparation

- Creates a clean, stable foundation for healing by addressing barriers like necrotic debris, harmful bioburden, and excess exudate.
- Facilitates smoother transitions between the inflammatory and proliferative phases, promoting granulation tissue formation and epithelialization.
- Prepares the wound for advanced therapies or definitive closure.

Non-adherent Layer

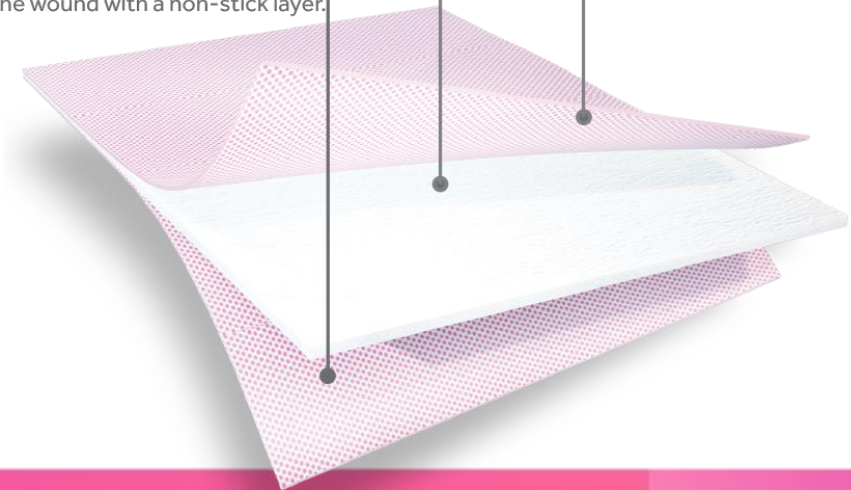
Protect the wound with a non-stick layer.

Super Absorbent, Hydro-capillary Layer

A wound care dressing designed to rapidly promote healing in acute/chronic wounds.

Non-adherent Layer

Protect the wound with a non-stick layer.





XLTA® CURE PRODUCT DIFFERENTIATION

XLTA® CURE: The right dressing for every wound

XLTA® Super (640gsm)

The **XLTA SUPER 640gsm** is the cornerstone of the XLTA range, offering unmatched versatility, adaptability, and reliability. Ideal for general use, it excels in diverse wound care scenarios, including triage and routine care, and integrates seamlessly into general wound care kits.

- **Flagship product** of the XLTA range, balancing price and performance.
- Highly **versatile** and **adaptive**, making it the "**go-to**" triage dressing.
- Designed to **compete** with leading **hydroconductive** and **hydrocapillary** dressings.

Key Applications:

- Broad applicability in **general wound care kits**.
- Effective in managing **moderate to high exudate levels**, ensuring reliable performance.





XLTA® CURE PRODUCT DIFFERENTIATION

XLTA® CURE: The right dressing for every wound

XLTA® Max (340gsm)

The **XLTA MAX 340gsm** is a lightweight and adaptable dressing tailored for both specialized and general wound care applications. With soft conformity and versatility, it excels in managing wounds with complex contours and challenging profiles.

- Complementary product suited for specialized and general applications.
- Differentiated for its lightweight, soft conformity, and high customizability.
- Maintains XLTA's advanced mechanism of action, ensuring reliable outcomes.

Key Features:

- Ideal as a primary dressing for difficult-to-dress wounds, including contours and cavities.
- Can be used as a secondary dressing for added absorption and support.

Key Applications:

- Best incorporated into specialized wound care kits for complex wound scenarios.
- Adapts seamlessly to challenging wound profiles, ensuring effective coverage and performance.





XLTA® CURE PRODUCT DIFFERENTIATION

XLTA® CURE: The right dressing for every wound



XLTA® Ace (750gsm)

The **XLTA ACE 750gsm** is a heavyweight dressing designed for wounds with high exudate, providing exceptional absorbency and fluid retention. Its robust construction makes it ideal for managing complex chronic and acute wounds, offering adaptability and reliability in advanced wound care scenarios.

- Complementary product tailored for high-exudate wound care.
- Differentiated for its heavyweight design, high absorbency, and adaptability.
- Maintains XLTA's advanced mechanism of action for proven efficacy in complex cases.

Key Features:

- Best as a secondary dressing for heavy exudate management in challenging wounds.
- Can also function as a primary dressing for added coverage and absorption.

Key Applications:

- Ideal for inclusion in complicated wound care kits.
- Effective for chronic wounds, acute wounds, and cases with heavy exudate requiring advanced absorbency and support.



WHY CHOOSE XLTA® CURE?

XLTA® CURE: Key features and benefits

XLTA® Cure combines cutting-edge wound care technology with a patient-centered approach to deliver exceptional clinical outcomes and user convenience:



Gentle and Comfortable

Atraumatic application and removal prioritize patient comfort while simplifying use for healthcare providers.



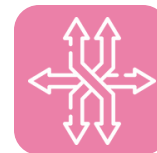
Non-Adherent Layers

Dual non-adherent surfaces prevent dressing adherence, ensuring effortless changes without disrupting the wound bed.



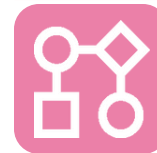
Customizable Fit

Easily trimmed to accommodate various wound shapes, contours, and cavities, offering superior adaptability to unique wound profiles.



Versatile Sizing Option

Available in multiple sizes and weights to meet the demands of diverse wound care situations.



Streamlined Application

Requires minimal supplementary materials for cleaning, securing, or additional support, enhancing workflow efficiency.



Reliable Wear Time

Suitable for daily dressing changes but capable of remaining in place for up to three days with proper clinical evaluation..



WHY CHOOSE XLTA® CURE?

XLTA® CURE: Key features and benefits

XLTA® Cure combines cutting-edge wound care technology with a patient-centered approach to deliver exceptional clinical outcomes and user convenience:



Broad Indications

Suitable for chronic and acute wounds. Effective for both infected and non-infected wound care. Functions as either a primary or secondary dressing



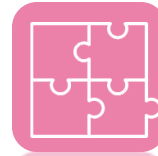
Primary & Secondary Dressing Versatility

XLTA works seamlessly as both a primary dressing—directly managing the wound bed—and as a secondary dressing, enhancing absorption and protection when layered over other products.



Multiple Layering

Can be layered to address high-exudate wounds or complex wound profiles, ensuring effective fluid management and sustained performance.



Compatibility with Other Products

XLTA integrates well with other wound care products, but we recommend using it in isolation to maximize its ability to catalyze natural healing processes.



Chemical-Free and Unmedicated

Free from chemicals and medication, reducing risks of adverse reactions while ensuring patient safety.



Natural Healing Support

Removes healing barriers and bioburden, creating an environment conducive to the body's natural recovery processes.



Supportive Healing Environment

Maintains ideal moisture levels to encourage granulation tissue formation and epithelialization, facilitating efficient wound closure.



WOUND INDICATIONS

XLTA[®] CURE: Indications for use

Not an exhaustive list



Surgical Wounds

- Clean Surgical Incisions
- Contaminated Surgical Wounds
- Dehisced Wounds



Burns

- Superficial Burns (First-Degree)
- Partial Thickness Burns (Second-Degree)
- Full Thickness Burns (Third-Degree)



Amputations

- Post-Surgical Amputation Sites
- Complex Amputation Wounds
- Amputation Stump Wounds



Ulcers

- Diabetic Ulcers
- Venous Leg Ulcers
- Pressure Ulcers



Tunneling and Undermining Wounds

- Tunneling Wounds
- Undermining Wounds
- Enterocutaneous Wounds



Animal and Insect Bites

- Superficial Bites
- Infected Bites
- Necrotic Bites



Infected Wounds

- Acute Infected Wounds
- Chronic Infected Wounds
- Necrotic Infected Wounds



THE CONVICTION

Why Choose **XLTA® CURE**?

Unmatched Versatility and Adaptability

- XLTA is designed to meet the needs of modern wound care by offering solutions for diverse wound types and clinical scenarios.
- Its customizable, non-adherent design ensures ease of use across a variety of cases, from routine dressing changes to the most complex wound management situations.
- Whether used as a primary or secondary dressing, XLTA delivers consistent performance, making it an indispensable choice for healthcare providers.



THE CONVICTION

Why Choose **XLTA® CURE**?

Proven Clinical Efficacy

- With its advanced exudate management system, XLTA supports the body's natural healing processes by maintaining optimal moisture levels, facilitating autolytic debridement, and preparing the wound bed for granulation and epithelialization.
- XLTA's innovative mechanism of action addresses key barriers to healing, including excess exudate, harmful bioburden, and imbalanced protease activity, enabling smoother transitions through the healing phases and faster recovery.



THE CONVICTION

Why Choose **XLTA® CURE?**

Commitment to Patient-Centered Care

- XLTA prioritizes patient comfort without compromising clinical outcomes.
- Its atraumatic removal reduces pain during dressing changes, while its chemical-free, unmedicated composition minimizes the risk of adverse reactions.
- By eliminating barriers to healing and supporting a stable wound environment, XLTA helps improve quality of life for patients and provides healthcare providers with a reliable and effective tool for achieving better outcomes.



Thank You

XLTA US LLC

5009 Roswell Road, Suite 203, Atlanta, Georgia 30242, USA

Tel: +1-833-777-9582 | Fax: +1-866-777- 9582

Email: info@xltaholdings.com

All rights reserved ©XLTA US LLC 2025

